

LED/Compact Fluorescent/Incandescent Dimmer

Single Pole (One Location) or 3-Way (Two location)

Catalog Number:DM17 / DM17N

LED/CFL 150W,Incandescent 600W 120VAC,60HZ

INSTALLATION INSTRUCTIONS

WARNINGS AND CAUTIONS:

- CAUTION:** Use with compatible dimmable LED, CFL bulbs, Incandescent or 120V halogen fixtures only. To avoid overheating and possible damage to this device and other equipment, **DO NOT** install to control a receptacle, a motor-or a transformer-operated appliance, or any other lighting sources than those specified.
- To be installed and/or used in accordance with appropriate electrical codes and regulations.
- If you are unsure about any part of these instructions, consult an electrician.
- Use this device with copper or copper clad wire only.

- Use only one (1) dimmer in a 3-or-4-way circuit. The switches will turn the light on at the brightness level selected at the dimmer.
- When multiple bulbs are used with one dimmer, do not mix bulb types. All bulbs shall be either LED, CFL or incandescent. Using the same make/model of each bulb will enhance dimmer performance.
- It is normal for the dimmer to feel warm to the touch during operation.
- Clean dimmer with a soft damp cloth only. Do not use any chemical cleaners.

TOOLS NEEDED TO INSTALL YOUR DIMMER:

Slotted/Phillips Screw driver
Pencil

Electrical Tape
Cutters

Pliers
Ruler

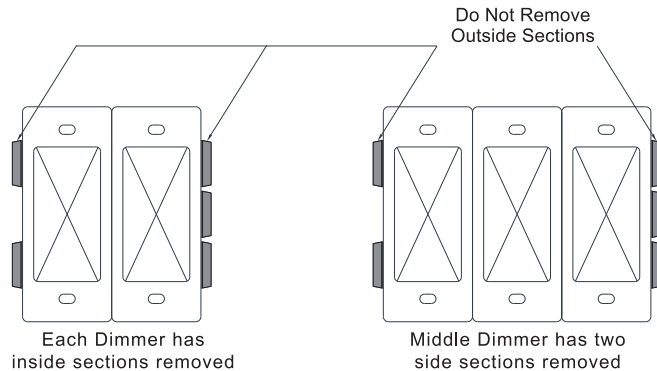
INSTALLING DIMMER BY ITSELF OR WITH OTHER DEVICES:

If installing Dimmer in single device application, proceed with the installing your dimmer section.

If installing Dimmer in a multi-device application, proceed as follows:

MULTI-DEVICE APPLICATION:

When installing more than one Dimmer in the same wallbox, it may be necessary to remove all inner side sections prior to wiring (see below). If pre-installed, remove the wallplate and wallplate adapter from dimmer. Using pliers, bend side section up and down until they break off. Repeat for each side section to be removed. Removal of dimmer side sections reduces maximum load capacity.



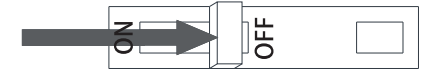
In incandescent multi-dimmer installations, the reduction of the dimmer's capacity is required. Refer to the chart for maximum load per dimmer. No derating is required for use in Dimmable CFL or dimmable LED multi-dimmer installations.

MAXIMUM LOAD PER DIMMER FOR MULTI-DEVICE(Incandescent)			
Cat. NO.	Single	Two Devices	More than 2 Devices
DM17 / DM17N	600W	500W	400W

INSTALLING YOUR DIMMER:

1. Turning OFF power:

Turn power OFF at circuit breaker (or remove fuse).



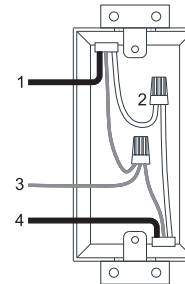
2. Removing wallplate and switch:

Remove wallplate and switch mounting screws.

Carefully remove switch from wall (do not remove wires).

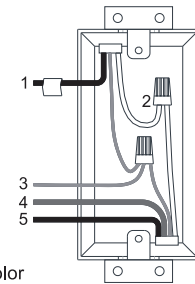
3. Identifying the type of circuit:

If the wiring in the wall box does not resemble any of these configurations, consult an electrician.



Single Pole

- Line (hot)
- Neutral
- Ground
- Load



3-Way

- Line or Load
(See NOTE below)
- Neutral
- Ground
- First Traveler - note color
- Second Traveler - note color

NOTE: For 3-way applications, note that one of the screw terminals from the old switch being removed will usually be a different color (Black) or labeled Common. Tag that wire with electrical tape and identify as the common (Line or Load) in both the dimmer wall box and 3-way wall box.

4. Wiring the Dimmer:

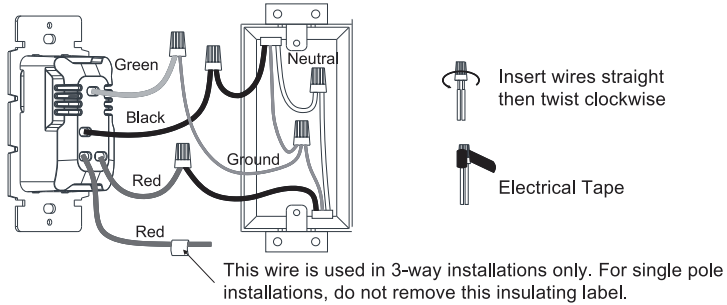
- Make sure that the ends of wires from the wall box are straight (cut if necessary).
- Remove 5/8" (1.6 cm) of insulation from each wire in the wall box.
- For Single-Pole Application, go to Step 4a.
- For 3-Way Application, go to Step 4b.

For non-standard wiring applications, refer to Wire Nut and Connector Size Chart

WIRE CONNECTOR / # OF COND. COMBINATION CHART

- 1 - #12 w/ 1 to 3 #14, #16 or #18
- 2 - #12 w/ 1 or 2 #16 or #18
- 1 - #14 w/ 1 to 4 #16 or #18
- 2 - #14 w/ 1 to 3 #16 or #18

4a. Single-Pole Wiring Application:

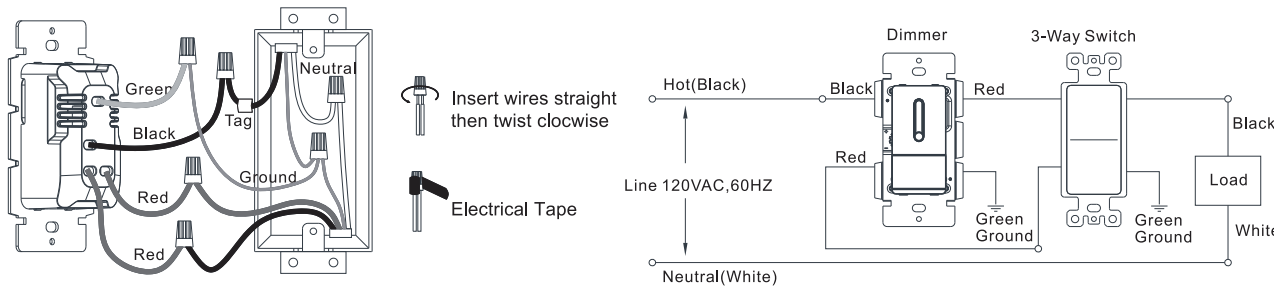


Connect wires per wiring diagram as follows:

Screw wire nuts on clockwise making sure no bare conductors show below the wire connectors. Secure each connector with electrical tape.

1. Green dimmer Ground lead to Green or bare copper wire in wall box.
2. Black dimmer lead to any wall box wire removed from old switch.
3. Red dimmer lead without insulating label to remaining wall box wire.
4. Remaining Red dimmer lead should have Red insulation label affixed.

4b. 3-Way Wiring Application:



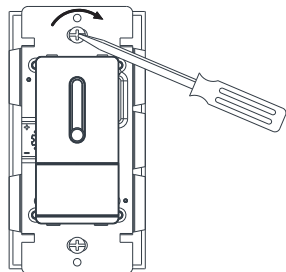
Connect wires per wiring diagram as follows:

Screw wire nuts on clockwise making sure no bare conductors show below the wire connectors. Secure each connector with electrical tape.

1. Green dimmer Ground lead to Green or bare copper wire in wall box.
2. Black dimmer lead to tagged (common) wall box identified when removing old switch.
3. Remove Red insulating label from Red lead.
4. Any Red dimmer lead to any of the remaining wall box wires.
5. Remaining Red dimmer lead to remaining wall box wire.

5. Mounting Dimmer to wallbox:

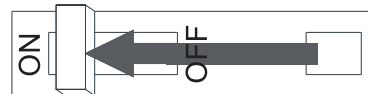
Turn OFF power at circuit breaker (or remove fuse).



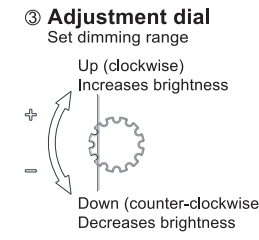
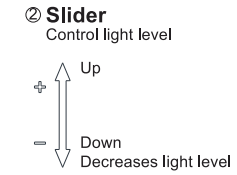
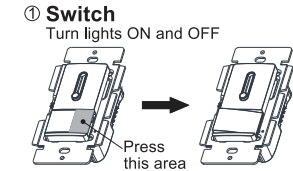
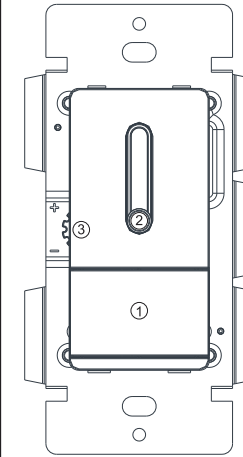
Form wires carefully into the wallbox, mount and align dimmer. Install wallplate.

6. Turning ON power:

Turn ON power at circuit breaker (or remove fuse).



DIMMER FEATURES:



IMPORTANT:
Set slider to bottom before adjusting dimming range

Dimming Range Adjustment:

To set the dimmer to reach the lowest stable light level that can be achieved with your light bulb(s).

1. Turn on dimmer switch ① (shown above). Move down slider ② to lowest light level.
2. Turn down (counter-clockwise) adjustment dial ③ to lowest possible dimming level where light output for all bulbs is stable and does not flicker or flash.

NOTE: If dial stops, do not continue turn.

3. Turn off dimmer switch ①, then back on. Verify that all bulbs turn on.
4. If all bulbs do not turn on, turn up (clockwise) adjustment dial ③ slightly and repeat step ③.
5. Once all bulbs turn on reliably, install wallplate.
(see wallplate section located on reverse side at lower left.)

ONE YEAR LIMITED WARRANTY:

The warranty gives you specific rights and you may also have other rights, which vary in different states and countries. Our company warrants to the original consumer purchaser that this product is free of defects in materials and workmanship for 1 year from the purchase date. **This warranty does not cover labor for removal or reinstallation of the product and is void on any product installed improperly or in an improper environment, overloaded, misused, opened, abused, or altered in any manner.** Our company excludes incidental or consequential damages for breach of any warranty on this product. Some jurisdictions may not allow limitations on how long an implied warranty lasts or the exclusion or limitation of incidental or consequential damages, so the above exclusions or limitations may not apply to you.