

# novera

by ELEGRP



## Product & Merchandising Solutions Guide

Exclusive for novera Distributors

novera  
a brand of ELEGRP

01 / About novera ..... 01

02 / Product Portfolio ..... 04

03 / Merchandising Guide ..... 13

04 / Marketing Support ..... 20

The name “novera” is inspired by two words.  
**innovative** – representing smart, forward-thinking solution,  
**era** – symbolizing a new chapter of modern living.

We believe in delivering reliable, intelligent electrical solutions that redefine everyday comfort, convenience, and energy efficiency in the home.

Designed with the perfect balance of innovation, simplicity, and durability, novera products integrate seamlessly into modern living spaces – empowering users to control their environment with ease and confidence.

Our product portfolio includes advanced lighting controls, USB charging devices, GFCI outlets, and sustainable accessories – delivering enhanced functionality and future-ready performance for smarter, greener homes.

As a consumer-focused brand under ELEGRP, novera combines over 26 years of manufacturing expertise with modern design and smart technology. Supported by ELEGRP's strong R&D capabilities and rigorous quality systems, we deliver professional-grade, integrated solutions to distributors and users across North America, Latin America, and beyond.



novera



## OUR MISSION & VISION

Transforming everyday spaces into smarter, safer, and more comfortable homes – through thoughtfully designed, reliable electrical products that blend seamlessly into your lifestyle.




# WORLD PRESENCE

Sold in over  
**40**  
countries worldwide

**amazon**  
BESTSELLER  
brand on Amazon


Trusted by over  
**1,000,000**  
households globally



 R&D / Manufacturing Centers  
Suzhou / Wenzhou / Shanghai, China

 After Sales Service Centers  
Suzhou, China

 Direct Fulfillment Centers  
Suzhou, China

 Markets  
China, US, Canada, Mexico, Europe, India, SEA, etc.



# PRODUCT PORTFOLIO



## Environment Control

Environmental Control solutions empower you to create the perfect atmosphere in your home. With precise control over humidity and lighting you can enhance comfort, improve well-being, and positively influence mood. Experience a living space that adapts to your needs and emotions.



## Energy Management

Energy Management solutions offer smart control for a sustainable home. With advanced switching devices for seamless power control, connecting devices for reliable energy flow, and power output devices for efficient energy delivery, we help reduce waste, lower costs and support a greener future—all while maintaining comfort and convenience.



## Wall Plate

novera wall plates deliver seamless integration, premium materials, and precision-engineered durability – ensuring reliable performance and a refined finish for every environment.

### Lighting Control

#### Night light

- GFCI Receptacle with Night Light
- Receptacle with Night Light

#### Dimmer

- Smart Dimmer
- High End Dimmer
- High Performance Dimmer
- Forward Phase Dimmer
- Entry Level Dimmer

### Humidity Control

- Humidity Sensor Switch

### Switching Devices

- Smart Switch
- Sensor Switch
- Traditional Switch

### Connecting Devices

- Electrical Adapter
- Locking Connector
- Adapter Cord

### Power Output Devices

#### Receptacle


- Smart Outdoor Plug
- EV Receptacle
- Residential Receptacle

#### GFCI Receptacle

- GFCI Receptacle with USB and Night Lights
- GFCI Receptacle - Tamper Resistant & Weather Resistant
- GFCI Receptacle - Tamper Resistant
- GFCI Receptacle
- GFCI Adapter

#### USB Receptacle

- Efficere Elite
- Efficere Pro
- Efficere Basic

-  Thermoplastic Wall Plate
- Thermosetting Wall plate
- Stainless Stell Wall Plate
- Metal Wall Plate



DM19 | EDM25 | DM17

## Environment Control

## Lighting Control

- Seamless dimming to match any mood.
- Compatible with LED, incandescent, and halogen bulbs.
- Control lights your way—rotate, touch, or tap.





EKA25A | EKA25B

## Environment Control

---

# Humidity Control

- Fan and light control in one switch, ideal for bathrooms, basements, and more.
- Smart sensor turns on with humidity or motion.
- Choose bath fan, humidistat, or air cycle mode.





## Energy Management

# Switching Devices

- Durable, high-impact resistant thermoplastic construction for long-lasting performance.
- Integrated sensors automatically turn off lights to reduce energy waste.
- Easy-to-install switches designed to combine functionality with modern style.



SPN10 | 1004A | SP17





## Energy Management

# Connecting Devices

- High impact and heat-resistant construction ensures maximum safety and longer lifespan.
- Reliable connectivity solutions for seamless power distribution.
- Designed for easy installation and long-term performance.



EA0210100G1 | L0520C | BTSAC-1430-50F





## Energy Management

# Power Output Devices - USB Receptacle

### **Efficere Basic**

Maximum output 21W, USB rating vary from 5V 3A to 5V 4.2A

### **Efficere Pro**

Maximum output 30W, USB rating vary from 5V 5.4A to 5V 6A

### **Efficere Elite**

Maximum output 65W, USB rating vary from 5V 3A to 20V 3.25A



ERU2221AC1A | R1820D60AAC | ERU2365CC2A



## Energy Management

### Power Output Devices - GFCI Receptacle

- PBE technology ensures maximum safety and reliable performance.
- Integrated nightlight option saves space and provides added convenience.
- Compatible with standard junction boxes for easy installation.



LGR2315ACL1 | G20AM | G1920T





## Energy Management

### Power Output Devices - Receptacle

- Compact, heavy-duty design for easy installation and durability.
- WR identifier embossed for quick weather-resistant recognition.
- Flush receptacles are completely ready-to-wire, shorten installation time significantly.

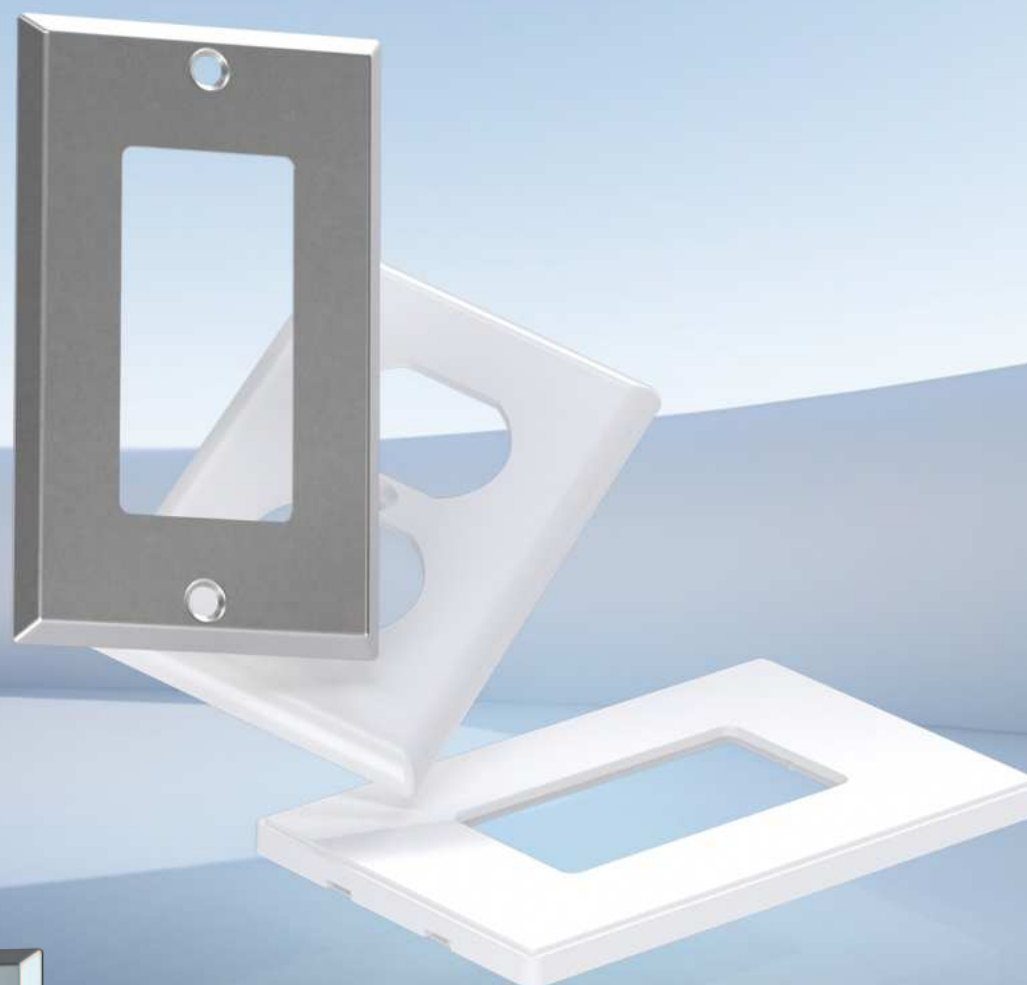


PQR10 | 2009W | 2106SW





3161 | 3021 | 3031GM | 31SBS



## Wall Plate

- Made from high-quality materials for long-lasting performance.
- Available in standard, medium, large and jumbo size.
- User-friendly design with simple installation.



## MERCHANDISING GUIDE & PACKAGING DESIGN

### Brand Store

We are committed to the success of every distributor – offering standardized, impactful retail solutions that enhance market competitiveness, strengthen brand presence, and drive sustainable growth.



## MERCHANDISING GUIDE & PACKAGING DESIGN

Brand Store Cashier Area



Brand Store Central Island





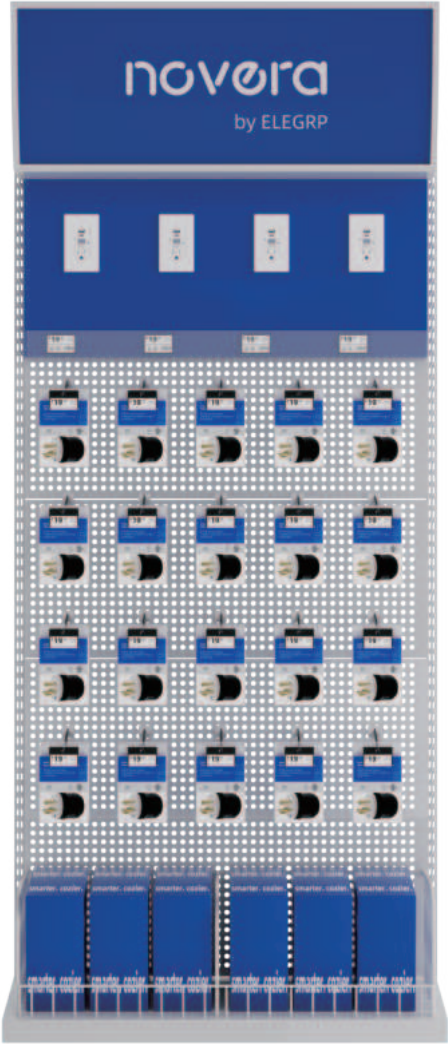
**MERCHANDISING GUIDE & PACKAGING DESIGN**

Brand Store - Product Display



MERCHANDISING GUIDE & PACKAGING DESIGN

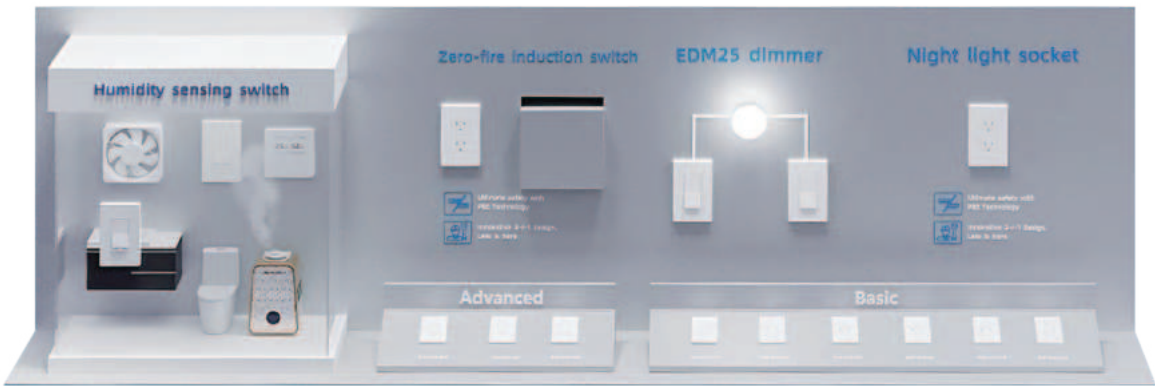
Retail Channel - Product Display





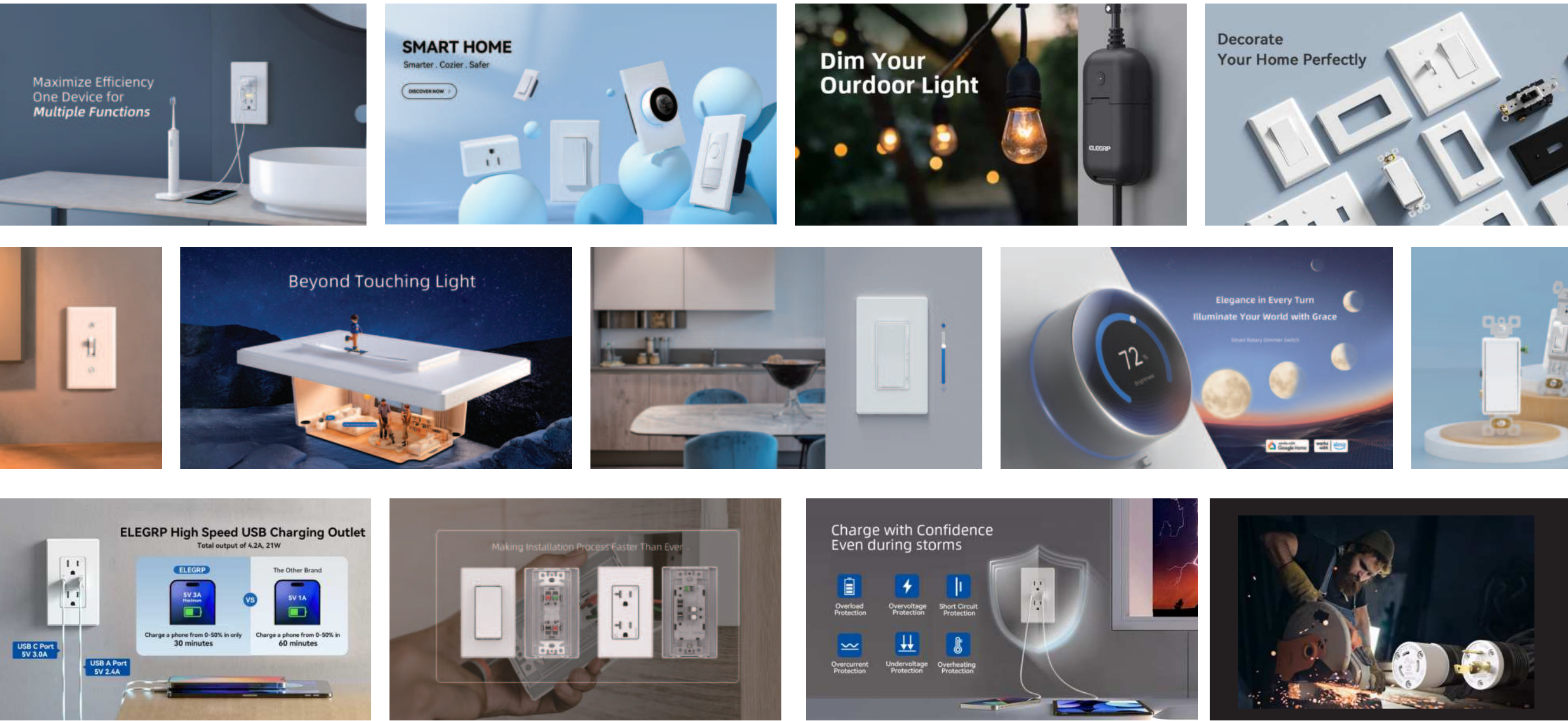
**MERCHANDISING GUIDE & PACKAGING DESIGN**

Interactive Demonstration



# MERCHANDISING GUIDE & PACKAGING DESIGN

## Wall Graphics & Signage





**MERCHANDISING GUIDE & PACKAGING DESIGN**

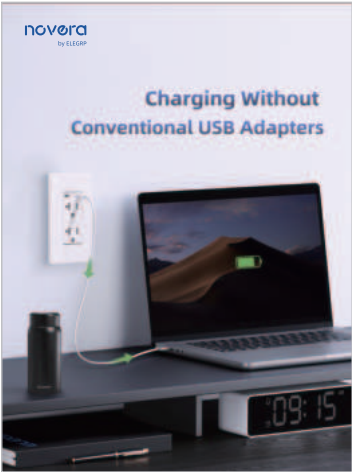
Packaging Design



**MARKETING SUPPORT**

**Product Support**

We offer brochures and posters that clearly communicate novera key benefits and make your product stand out in every sales opportunity.



**Activity Support**

Our dedicated product training and technical workshops provide your teams with the knowledge and skills needed to successfully promote and represent novera products.





**MARKETING SUPPORT**

**Material Support**

We supply practical branded materials – including tents, T-shirts, and promotional items – designed to boost visibility, enhance retail displays, and support marketing activities.





Growing Together, Achieving More.

ELE(GROUP)CO.,LTD

NO.158 CHUANGYUAN ROAD, SIP, SUZHOU, JIANGSU, CHINA 215125

Vist [www.elegrp.com](http://www.elegrp.com) for more information.

